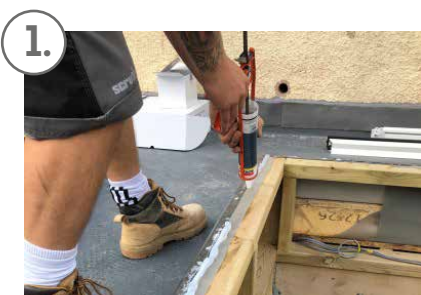


Aluminium Lantern Fitting Guide

Tools Required:

Silicone Gun
Stanley Knife
Compatible Sealant
Cordless screwdriver

We try wherever possible to deliver the ring beam pre-assembled for ease of install.



Apply suitable sealant to the perimeter of the kerb upstand.



Place the ring beam on the kerb. Ensure it is square and centralise.



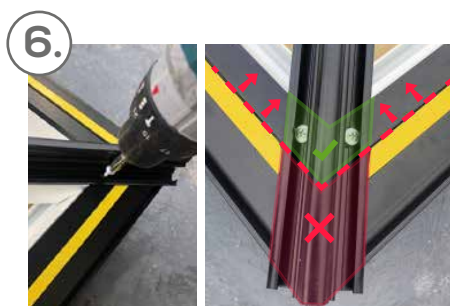
Secure the ring beam through the pre-drilled holes using the 70mm pan head screws supplied.



Position the Hip bar into the crown moulding and slide down to locate.



Secure the Hip to the moulding using 13mm Hex bolt and washer. Repeat for all hips.



Place the frame (spider) into the ring beam, position and fix with 13mm pan head screws - AS SHOWN

IMPORTANT - The screws need to be positioned above the yellow tape





Position the ridge body with location dots at the same end. Attach with 80mm self drilling pan head screws.



Remove yellow security tape film in preparation for glazing.

Aluminium Lantern Fitting Guide

9.  


Position the glass end closure centrally to the sealed unit making sure there is an equal gap each end.

10.  

All glass units must be pushed up tight to the ridge before locating onto the ring beam or the end closure wont locate. Press the glass down onto the security tape and ensure the end closure locates into the ring beam pocket.

11.  



Ensure top caps are flush with the bottom of the bar and tap down firmly with a rubber/nylon mallet.

12. 

Fit the end caps with security screws provided - two screws per cap. (TR20 security bit supplied).

13.   

Fit the top cap seal into the top cap and position on top of the frame.

14.  

Secure the top cap in place using 6mm Allen bolt from the underside. Insert the plastic cover over the Allan bolt.

Your rooflights is now complete!!